

**Supplemental Table 1: Types of treatment administered to all individuals in this study, according to line of therapy**

	<b>First line therapy</b>	<b>Second line therapy</b>	<b>Third line therapy*</b>
<b>Number of patients</b>	<b>282</b>	<b>128</b>	<b>77</b>
Chemoimmunotherapy	112	27	10
Chemotherapy	54	31	18
Monoclonal antibody therapy alone	71	29	20
Novel agents	40	30	19
Other	5	11	10

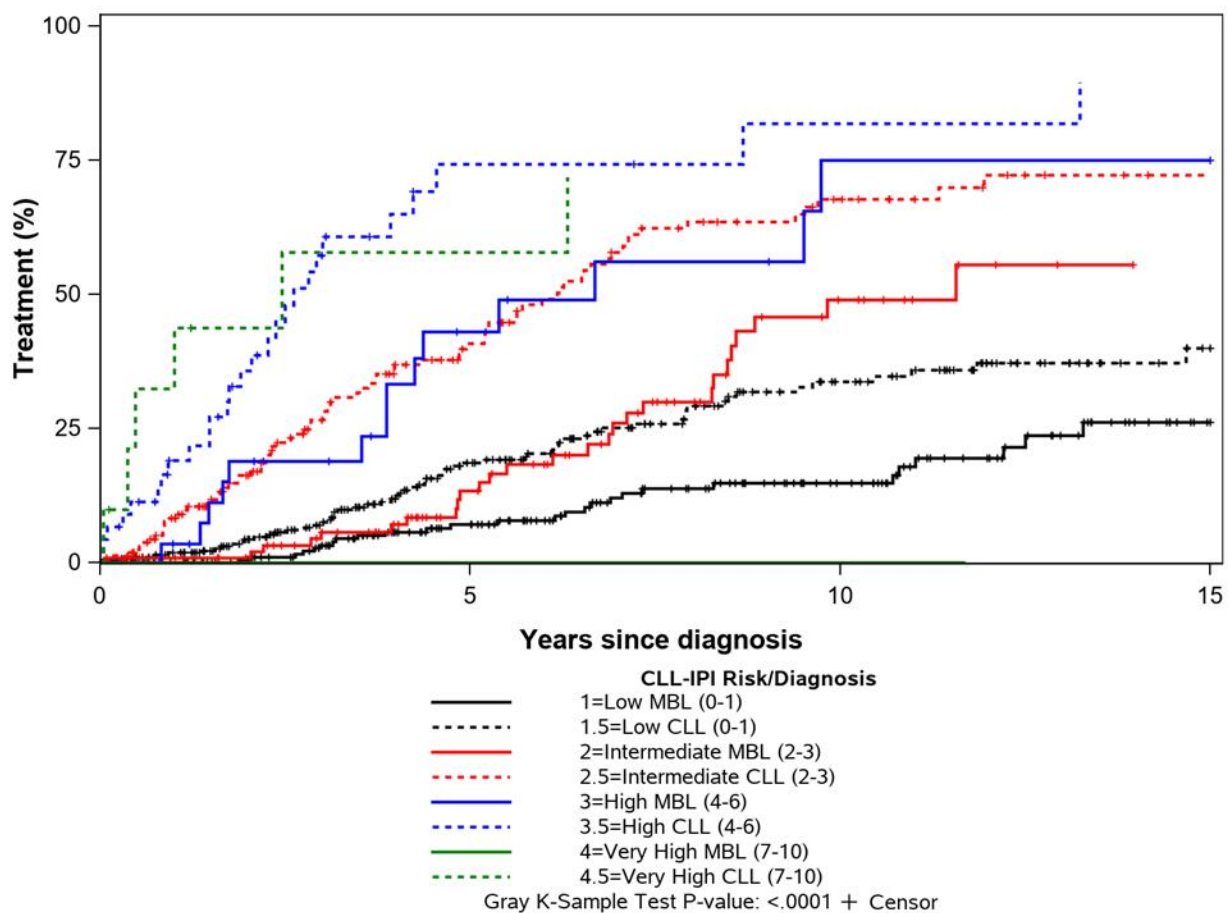
\* Median (range) number of treatments was 1 (1-13). Of the 77 patients who needed third and subsequent lines of treatment, 71 had not received a prior novel agent. Among these 71 patients, 39 received a novel agent at some point (17 as the third line, and 22 at a subsequent line), and 32 patients never received a novel agent.

**Supplemental Figure 1:** Time to first therapy among all individuals included in the study – divided according to MBL or Rai 0 CLL status; and by CLL-IPI risk group. Note: Individuals with MBL who had very high risk CLL-IPI score (n=4) did not need therapy with current follow-up and hence Figure 1B does not show any events for that group.

**Supplemental Figure 2:** Time to first therapy in the overall cohort (**Supplemental Figure 2A**), and in individuals with MBL (**Supplemental Figure 2B**) and CLL (**Supplemental Figure 2C**) according to the CLL-IPI risk groups of low, intermediate and high/very high.

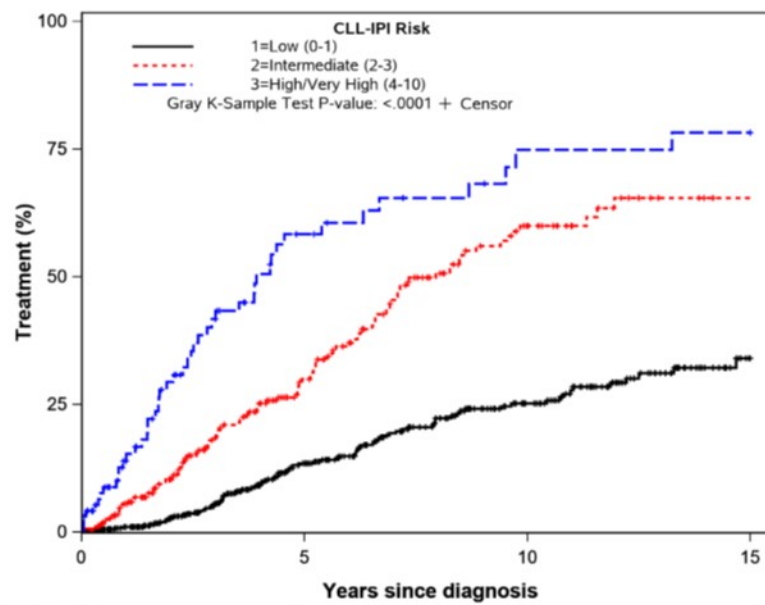
**Supplemental Figure 3:** Overall survival in the overall cohort (**Supplemental Figure 2A**), and in individuals with MBL (**Supplemental Figure 2B**) and CLL (**Supplemental Figure 2C**) according to the CLL-IPI risk groups of low, intermediate and high/very high.

Supplemental Figure 1



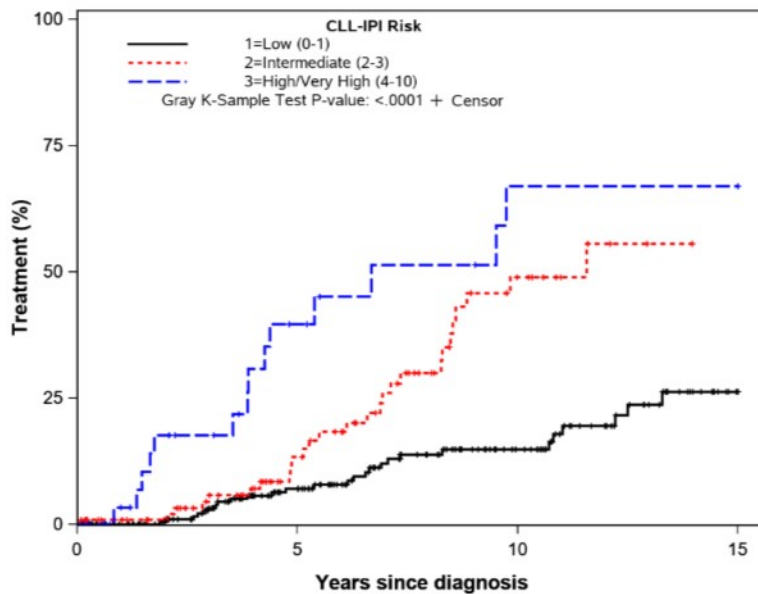
Supplemental  
Figure 2

A



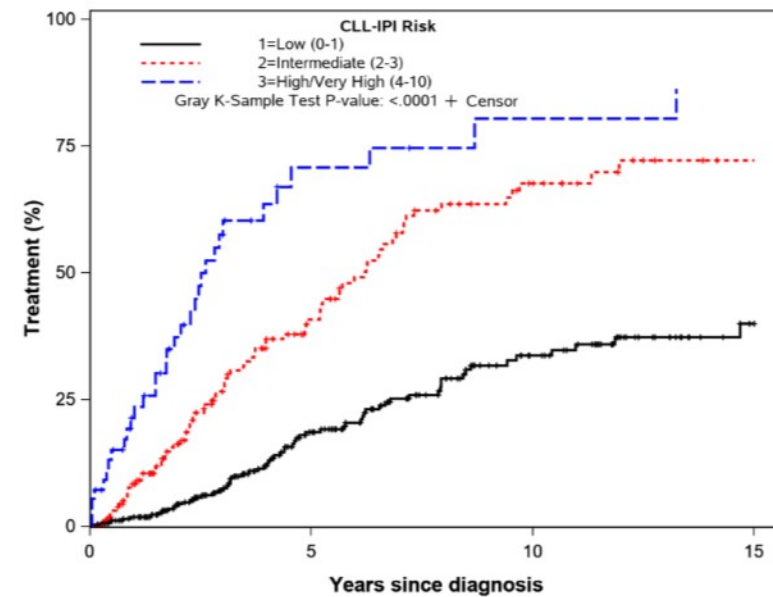
1=Low (0-1)	566	264	119	25
2=Intermediate (2-3)	304	106	28	3
3=High/Very High (4-10)	99	15	3	1

B



1=Low (0-1)	258	129	60	9
2=Intermediate (2-3)	116	50	11	0
3=High/Very High (4-10)	41	10	2	1

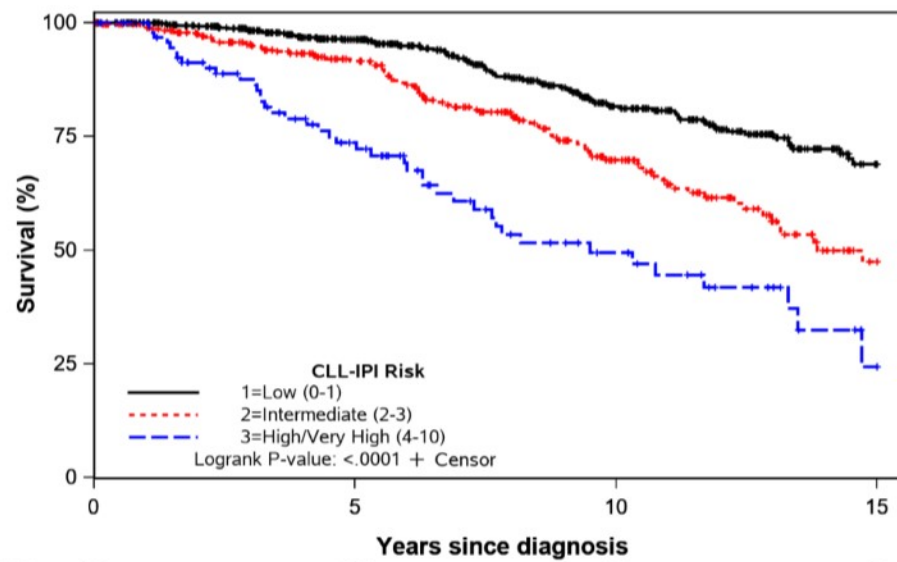
C



1=Low (0-1)	308	135	59	16
2=Intermediate (2-3)	188	56	17	3
3=High/Very High (4-10)	58	5	1	0

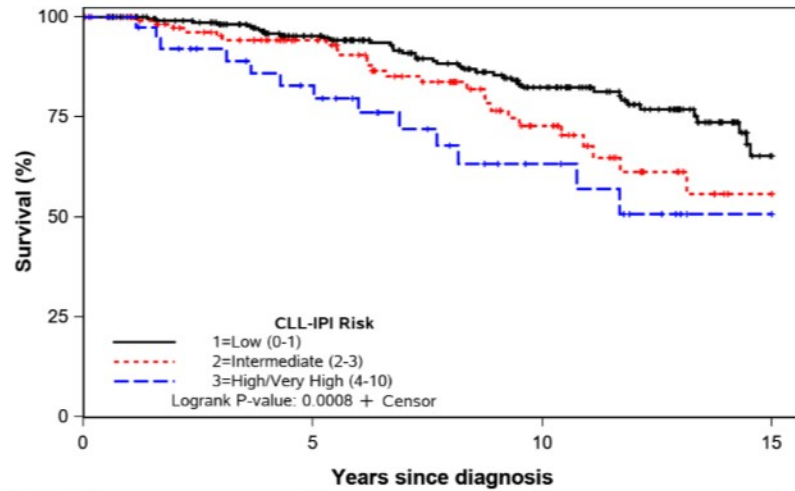
Supplemental  
Figure 3

A



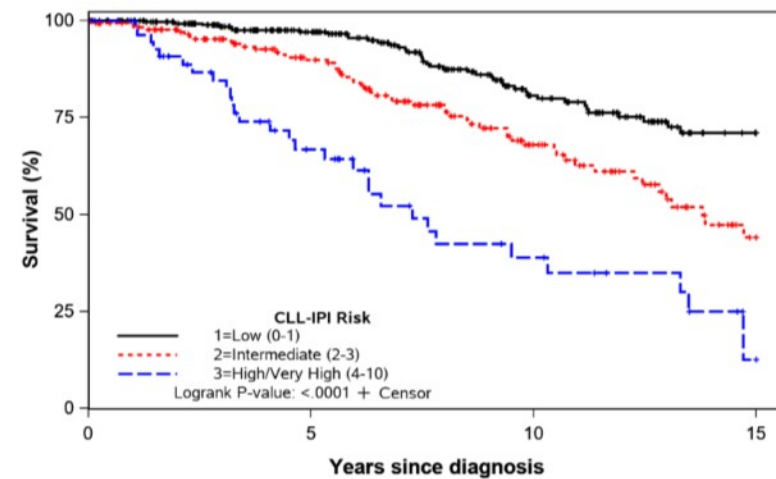
1=Low (0-1)	566	371	193	53
2=Intermediate (2-3)	304	204	89	19
3=High/Very High (4-10)	99	53	22	3

B



1=Low (0-1)	258	174	98	19
2=Intermediate (2-3)	116	80	34	6
3=High/Very High (4-10)	41	26	11	2

C



1=Low (0-1)	308	197	95	34
2=Intermediate (2-3)	188	124	55	13
3=High/Very High (4-10)	58	27	11	1