

Patrick DL, et al. Effect of lisocabtagene maraleucel on HRQoL and symptom severity in relapsed/refractory large B-cell lymphoma

SUPPLEMENTAL DATA

Supplemental Table 1. EORTC QLQ-C30 scores over time for the scales included in the primary analysis.

Time point	Statistics	Global health status/QoL*	Physical functioning*	Fatigue†	Pain†
Baseline	n	181	181	181	181
	Mean (StD) score	62.3 (20.3)	77.8 (19.2)	38.2 (21.8)	25.6 (25.8)
1 month	n	160	160	160	160
	Mean (StD) change from baseline	+4.3 (19.5)	-4.8 (20.6)	0.0 (25.8)	-6.5 (24.9)
2 months	n	146	147	147	147
	Mean (StD) change from baseline	+11.9 (22.6)	+2.8 (18.0)	-10.2 (24.3)	-8.1 (26.1)
3 months	n	135	134	134	135
	Mean (StD) change from baseline	+10.3 (22.5)	+1.4 (20.2)	-7.7 (25.8)	-2.1 (28.5)
6 months	n	93	93	93	93
	Mean (StD) change from baseline	+13.0 (21.7)	+2.9 (19.4)	-7.9 (27.3)	-3.1 (23.6)
9 months	n	84	84	84	84
	Mean (StD) change from baseline	+13.3 (21.8)	+4.6 (20.8)	-9.9 (25.3)	-0.6 (28.4)
12 months	n	62	62	62	62
	Mean (StD) change from baseline	+16.7 (21.2)	+7.0 (19.8)	-14.7 (27.2)	-7.0 (25.9)
18 months	n	25	25	25	25
	Mean (StD) change from baseline	+19.7 (25.6)	+6.9 (22.7)	-15.1 (29.9)	-8.7 (29.7)

Data are for the EORTC QLQ-C30-evaluable population.

*Positive change denotes improvement.

†Negative change denotes improvement.

Supplemental Table 2. EORTC QLQ-C30 scores over time for the scales included in the exploratory analysis.

Time point	Statistics	Role functioning*	Emotional functioning*	Cognitive functioning*	Social functioning*
Baseline	n	181	181	181	181
	Mean (StD) score	67.3 (28.8)	83.0 (17.4)	84.0 (17.8)	66.7 (27.7)
1 month	n	160	160	160	160
	Mean (StD) change from baseline	-1.2 (30.5)	+0.4 (15.4)	+1.7 (19.5)	+0.3 (31.2)
2 months	n	147	146	146	146
	Mean (StD) change from baseline	+9.8 (30.1)	+3.4 (16.5)	+6.7 (18.9)	+10.1 (33.4)
3 months	n	134	135	135	135
	Mean (StD) change from baseline	+8.2 (32.6)	+2.0 (15.1)	+2.8 (17.9)	+11.7 (30.5)
6 months	n	93	93	93	93
	Mean (StD) change from baseline	+5.7 (29.7)	+3.5 (16.3)	+1.4 (18.5)	+11.8 (31.6)
9 months	n	84	84	84	84
	Mean (StD) change from baseline	+8.9 (30.2)	+3.6 (17.1)	+2.2 (18.3)	+14.3 (30.4)
12 months	n	62	62	62	62
	Mean (StD) change from baseline	+10.5 (30.2)	+6.4 (16.4)	+3.2 (21.3)	+19.9 (33.0)
18 months	n	25	25	25	25
	Mean (StD) change from baseline	+14.7 (33.1)	+11.6 (18.1)	+9.3 (22.1)	+20.7 (32.7)

Data are for the EORTC QLQ-C30-evaluable population.

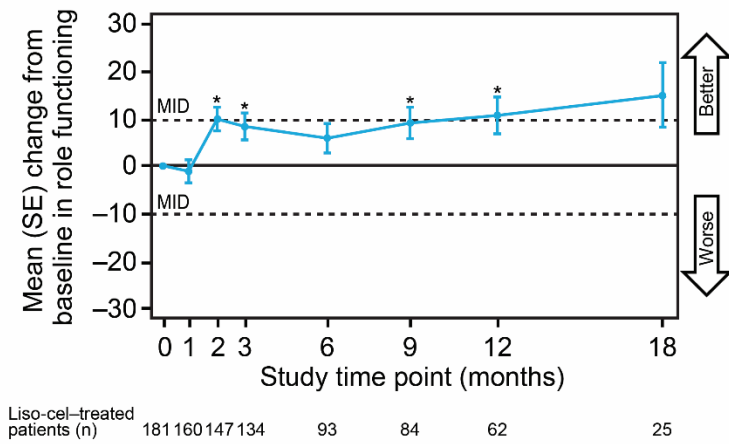
*Positive change denotes improvement.

Supplemental Figure 1. Changes in EORTC QLQ-C30 scores over time for the scales included in the exploratory analysis.

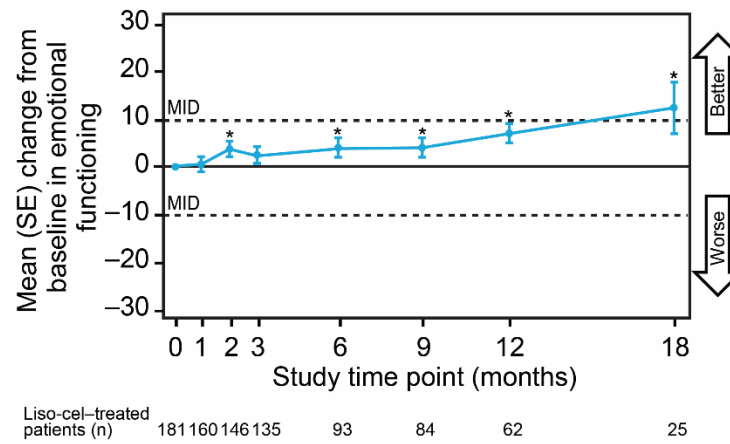
(A) Role functioning. (B) Emotional functioning. (C) Cognitive functioning. (D) Social functioning. Data are for the EORTC QLQ-C30-evaluable population. The MID was defined as a ≥ 10 -point change in either direction. *Unadjusted *P* value for change from baseline < 0.05 , two-sided Wilcoxon signed rank test. The test was only performed for assessments where the sample size was ≥ 10 .

Supplemental Figure 1

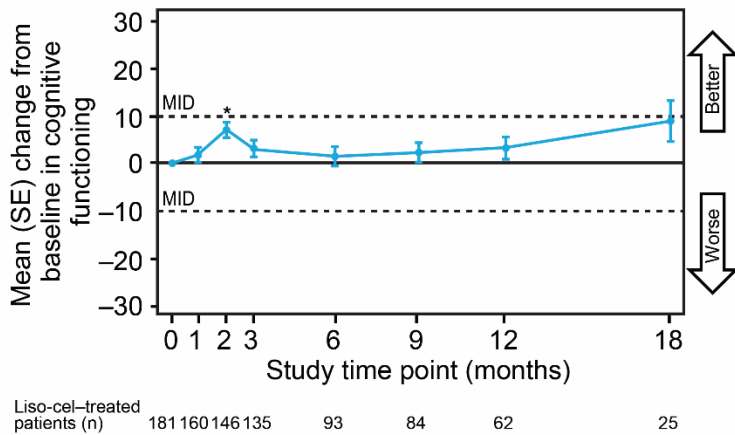
A



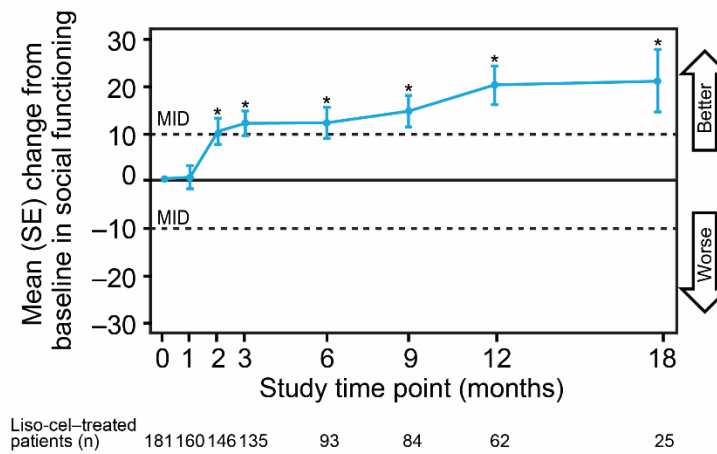
B



C



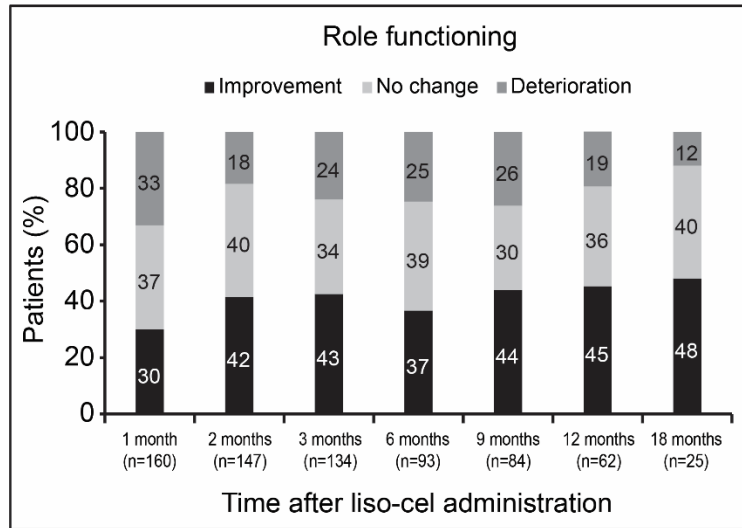
D



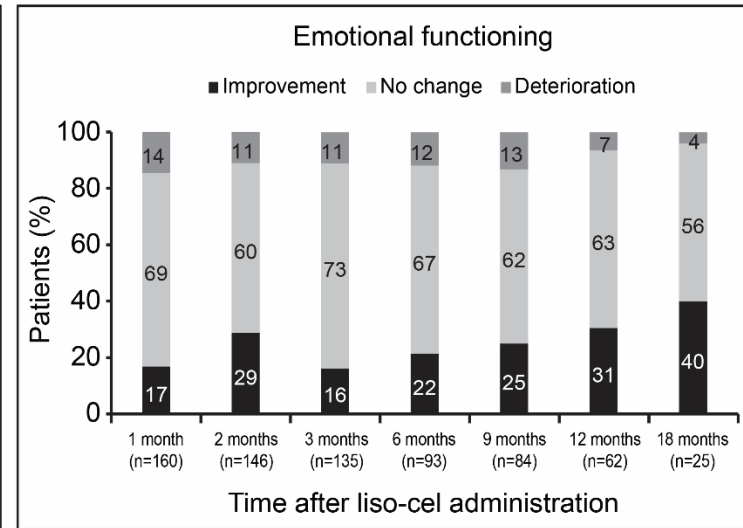
Supplemental Figure 2. Individual-level analysis for the EORTC QLQ-C30 scales included in the exploratory analysis. (A) Role functioning. (B) Emotional functioning. (C) Cognitive functioning. (D) Social functioning. Data are for the EORTC QLQ-C30-evaluable population. Percentages were calculated using the total number of patients who had provided answers for $\geq 50\%$ of the items on the given scale. Improvement was defined as a ≥ 10 -point increase from baseline. No change was defined as a < 10 -point increase or decrease from baseline. Deterioration was defined as a ≥ 10 -point decrease from baseline.

Supplemental Figure 2

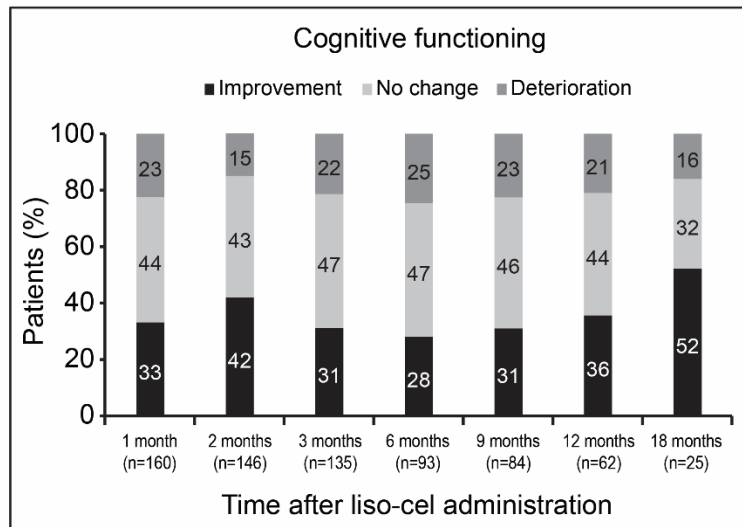
A



B



C



D

